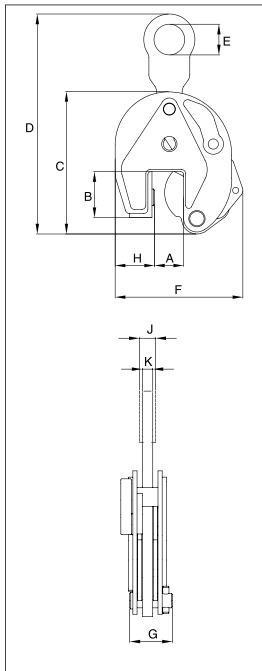


# Vertical Clamps

## IP10



The IP10 vertical lifting clamp is used for the lifting, turning, moving or vertical transfer of sheet, plates, or fabrications from horizontal to vertical and down to horizontal (180°) as needed. Usually used as a single point pick or when used with a spreader beam with multiple vertical drop lines.



## For Vertical Lifting, Turning and Transfer

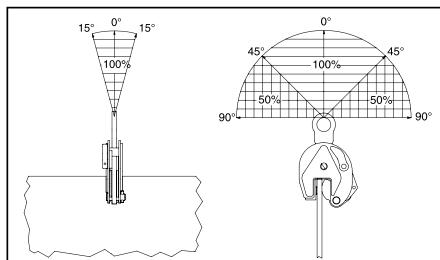
- Available in capacities of .5 thru 30 metric tons (Higher Working Load Limits are available upon request).
- Wide variety of jaw openings available: 0" to 6.10".
- Welded alloy steel body for strength and smaller size. Forged alloy components, where required.
- Individually Proof Tested to 2 times the Working Load Limit with certification.
- Company name (CrosbyIP), logo, Working Load Limit and jaw opening permanently stamped on body.
- Each product is individually serialized, with the serial number and Proof Load test date stamped on body. Serial number is included on the test certificate with maintenance and warranty logbook.
- Available in a variety of styles:
  - IP10 - Standard clamp for materials with a surface hardness to 37Rc (345 HB).
  - IP10J - Larger jaw opening.
  - IP10S - For use with Stainless Steel material.
  - IP10H - For use with materials with a surface hardness to 47Rc (450 HB).
- Full 180° turning range for material transfer, turning or moving.
- Lock open, lock closed ability with latch for pretension on material and then release of material.
- Optional IP-5000 Stinger assembly available (see page 420). Allows for easy connection between the clamp and hoist hook.
- Minimum WLL of 10% of Maximum WLL.
- Maintenance replacement kits are available.
- Manufactured by a ISO 9001 facility.
- All sizes are RFID EQUIPPED.



### Model IP10

Model	Working Load Limit (t)*	IP10 Stock No.	Weight Each (lbs.)	Dimensions (in.)									
				Jaw A	B	C	D	E	F	G	H	J	K
IP10	0.5	2701674	3.97	0 - .63	1.73	5.04	8.15	1.18	4.53	1.61	1.10	-	.39
IP10	1	2701662	4.85	0 - .75	1.77	5.47	8.46	1.18	4.96	1.61	1.50	-	.39
IP10	2	2701676	16.8	0 - 1.38	3.07	7.91	13.23	2.76	7.48	2.40	2.17	-	.63
IP10	3	2701664	30.4	0 - 1.56	3.94	9.96	17.17	2.95	8.86	3.07	2.36	-	.79
IP10	4.5	2701666	33.1	0 - 1.56	3.94	9.96	17.17	2.95	9.13	3.23	2.56	-	.79
IP10	6	2701668	51.9	0 - 2.00	4.96	11.89	20.28	3.15	11.50	3.31	3.74	1.57	.79
IP10/J	6	2701705	62.9	2.00 - 4.00	4.96	11.89	20.28	3.15	13.46	3.31	3.74	1.57	.79
IP10	9	2701670	60.7	0 - 2.00	4.96	12.80	21.65	3.15	12.20	3.62	4.13	1.73	.79
IP10/J	9	2701672	62.9	2.00 - 4.00	4.96	12.80	21.65	3.15	14.17	3.62	4.13	1.73	.79
IP10	12	2701678	108	0 - 2.13	6.30	15.39	22.83	3.16	13.03	4.61	5.39	1.61	.98
IP10/J	12	2701680	128	2.13 - 4.25	7.01	17.28	24.80	3.15	16.34	4.61	5.39	1.61	.98
IP10	16	2701682	150	.25 - 2.50	7.01	18.31	27.17	3.46	15.63	4.69	6.02	1.93	.98
IP10/J	16	2701684	199	2.50 - 5.00	8.19	20.51	29.37	3.46	18.58	4.69	6.34	1.93	.98
IP10	22.5	2701686	238	.25 - 3.13	8.74	21.81	31.50	4.33	18.50	5.35	7.32	1.93	.98
IP10/J	22.5	2701688	243	3.13 - 6.10	9.96	24.72	34.65	4.33	22.64	5.35	7.72	1.93	.98
IP10	30	2701690	327	.25 - 3.13	8.74	21.46	31.50	4.33	18.50	5.98	7.32	2.13	1.18
IP10/J	30	2701692	335	3.13 - 6.10	9.84	24.41	34.65	4.33	22.24	5.98	7.72	2.13	1.18
<b>For stainless steel - with fixed hoisting eye</b>													
IP10/S	0.5	2702274	3.97	0 - .63	1.73	5.04	8.15	1.18	4.53	1.61	1.10	-	.39
IP10/S	1	2702262	4.41	0 - .75	1.77	5.47	8.46	1.18	4.96	1.61	1.50	-	.39
IP10/S	2	2702276	15.0	0 - 1.38	3.07	7.91	13.23	2.76	7.48	2.40	2.17	-	.63
IP10/S	3	2702264	30.5	0 - 1.56	3.94	9.96	17.17	2.95	8.86	3.07	2.36	-	.79
IP10/S	4.5	2702266	33.1	0 - 1.56	3.94	9.96	17.17	2.95	9.13	3.23	2.56	-	.79
IP10/S	6	2702268	51.9	0 - 2.00	4.96	11.89	20.67	3.15	11.50	3.31	3.74	1.57	.79
IP10/S	9	2702270	60.7	0 - 2.00	4.96	12.80	21.93	3.15	12.20	3.62	4.13	1.73	.98
IP10/S	12	2702278	108	0 - 2.13	6.30	15.39	24.53	3.15	13.03	4.61	5.39	1.61	.98
<b>For very hard materials - with fixed hoisting eye</b>													
IP10/H	0.5	2702174	3.97	0 - .63	1.73	5.04	8.15	1.18	4.53	1.61	1.10	-	.39
IP10/H	1	2702176	15.0	0 - 1.38	3.07	7.91	13.23	2.76	7.48	2.40	2.17	-	.39
IP10/H	2	2702164	30.4	0 - 1.56	3.94	9.96	17.17	2.95	8.86	3.07	2.36	-	.63
IP10/H	3	2702166	33.1	0 - 1.56	3.94	9.96	17.17	2.95	9.13	3.23	2.56	-	.79
IP10/H	4.5	2702168	51.9	0 - 2.00	4.96	11.89	20.28	3.15	11.50	3.31	3.74	1.57	.79
IP10/H	6	2702170	60.7	0 - 2.00	4.96	12.80	21.65	3.15	12.20	3.62	4.13	1.73	.98

\* Design Factor based on EN 13155 and ASME B30.20.



# Horizontal Clamps

## IPBC



The IPBC horizontal lifting clamps have a pretension feature that allows the user to attach the clamps to the material for horizontal lifting and transfer of sagging and non-sagging material. These clamps may also be used to handle material that will be used in shears, bending and rolling machines or other fabrication equipment. May also be used for turning beams from the "H" into the "I" position.

## For Horizontal Transfer - with Pretension System

- Available in capacities of 1 thru 4.5 metric tons.
- Jaw openings available: 0" to 1.56".
- Welded alloy steel body for strength and smaller size. Forged alloy components, where required.
- Individually Proof Tested to 2 times the Working Load Limit with certification.
- Company name (CrosbyIP), logo, Working Load Limit and jaw opening permanently stamped on body.
- Each product is individually serialized, with the serial number and Proof Load test date stamped on body. Serial number is included on the test certificate with maintenance and warranty logbook.
- Maintenance replacement parts are available.
- Manufactured by a ISO 9001 facility.
- All sizes are **RFID EQUIPPED**.

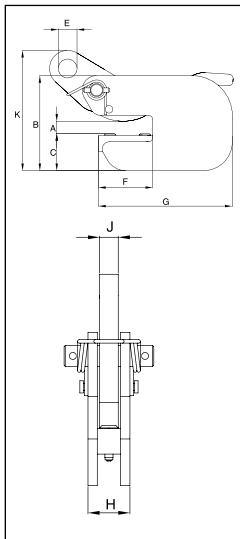
## IPHGZ



The IPHGZ, IPHGZ horizontal lifting clamps have a pretension locking feature that allows the user to attach the clamps to the material for horizontal lifting and transfer of sagging and non-sagging material. These clamps may also be used to handle material that will be used in shears, bending and rolling machines or other fabrication equipment. May also be used to move and lift structural shapes such as I-Beams, H-beams etc.



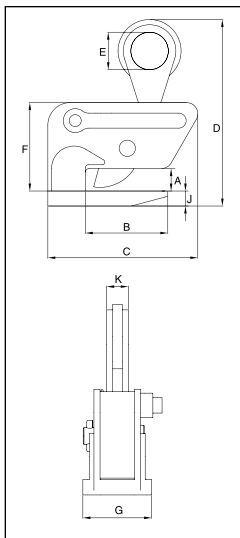
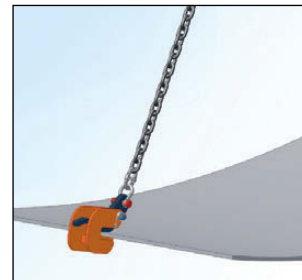
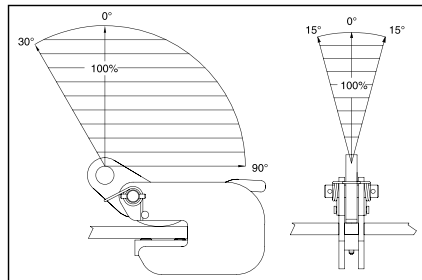
**Load Rated**



### Model IPBC

Model	Working Load Limit (t)*	IPBC Stock No.	Weight Each (lbs.)	Dimensions (in.)								
				Jaw A	B	C	E	F	G	H	J	K
IPBC	1	2700410	7.72	0 - .75	5.20	2.05	1.02	2.95	7.28	1.42	.63	7.17
IPBC	2	2700411	14.3	0 - 1.00	5.98	2.44	1.18	3.23	8.27	1.93	.79	8.58
IPBC	3	2700412	18.8	0 - 1.00	6.18	2.60	1.18	3.23	8.27	2.24	.79	8.86

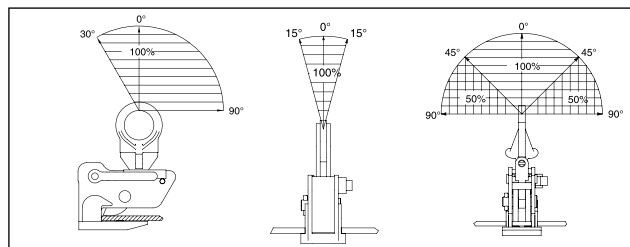
\* Design Factor based on EN 13155 and ASME B30.20.



### Model IPHGZ: Universal Lifting Eye Model IPHGZ: Fixed Hoisting Eye

Model	Working Load Limit (t)*	Stock No.	Weight Each (lbs.)	Dimensions (in.)								
				Jaw A	B	C	D	E	F	G	J	K
IPHGZ	1.5	2705455	19.8	0 - 1.00	4.33	9.13	11.30	2.76	5.47	3.54	.79	.63
IPHGZ	3.0	2705456	43.9	0 - 1.56	4.69	9.96	13.70	2.95	6.89	4.72	.98	.79
IPHGZ	4.5	2705457	66.1	0 - 1.56	4.69	11.85	14.57	3.15	6.89	6.10	1.18	1.73
Fixed Hoisting Eye												
IPHGZ	.75	2705451	8.82	0 - 1.00	3.23	5.83	8.11	1.97	3.90	3.86	.47	.87
IPHGZ	1.5	2705452	16.1	0 - 1.00	4.33	7.87	9.84	1.97	4.65	3.54	.79	1.10
IPHGZ	3.0	2705453	27.1	0 - 1.56	4.72	8.94	12.01	2.76	5.83	4.72	.98	1.26
IPHGZ	4.5	2705454	55.1	0 - 1.56	4.72	11.18	15.00	2.76	7.13	6.10	1.18	1.57

\* Design Factor based on EN 13155 and ASME B30.20.



Crosby Lifting Clamps

# Horizontal Clamps

## IPH10E



The IPH10E / IPH10JE horizontal lifting clamps are for use in the lifting and transfer in horizontal position of non-sagging materials or of bundles of non-sagging material. These clamps must be used in pairs or more.

## For Horizontal Lifting and Transfer

- Available in capacities of .75 thru 25 metric tons.
- Wide variety of jaw openings available: 0 to 120mm.
- Welded alloy steel body for strength and smaller size. Forged alloy components, where required.
- Equipped with handle for easy placement.
- Individually Proof Tested to 2 times the Working Load Limit with certification.
- Company name (CrosbyIP), logo, Working Load Limit and jaw opening permanently stamped on body.
- Each product is individually serialized, with the serial number and Proof Load test date stamped on body. Serial number is included on the test certificate with maintenance and warranty logbook.
- Maintenance replacement parts are available.
- Manufactured by a ISO 9001 facility.
- All sizes are RFID EQUIPPED.

## IPHOZ



The IPHOZ horizontal lifting clamp is to be used for lifting and transferring, in the horizontal position, of thin sheet and other materials that will sag or bend when lifted. These clamps must be used in pairs or more.



### Model IPH10E: Jaw opening range 0 to 2.36in

Model	Working Load Limit (Per Pair) (t)*	IPHTONZ Stock No.	Weight Each (lbs.)	Dimensions (in)								
				Jaw A	B	C	E	F	G	H	J	K
IPH10E	2	2703542	12.1	0 - 2.36	4.61	.63	.87	4.29	10.1	4.33	.79	1.58
IPH10E	3	2703543	16.5	0 - 2.36	4.61	.79	1.02	4.29	10.5	4.73	.79	1.89
IPH10E	4.5	2703544	23.2	0 - 2.36	5.20	.99	1.18	4.10	11.0	5.12	.79	1.89
IPH10E	6	2703545	28.7	0 - 2.36	5.63	.99	1.42	4.85	12.6	5.12	.79	1.89
IPH10E	9	2703546	40.8	0 - 2.36	6.19	1.18	1.69	5.24	13.0	5.52	.99	2.44
IPH10E	12	2703547	47.4	0 - 2.36	6.78	1.18	1.85	5.56	13.9	5.91	.99	2.44
IPHTOZ	25	2705119	86.0	0 - 2.38	6.65	1.57	1.85	6.69	11.81	8.66	1.26	.87

\* Design Factor based on EN 13155 and ASME B30.20.

### Model IPH10JE: Jaw opening range 2.36 to 4.73"

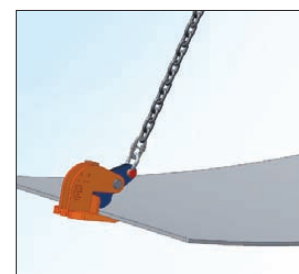
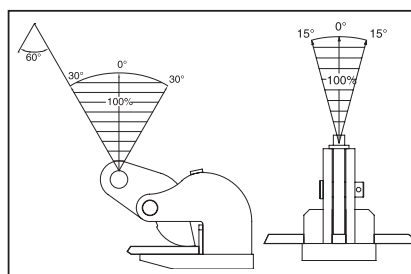
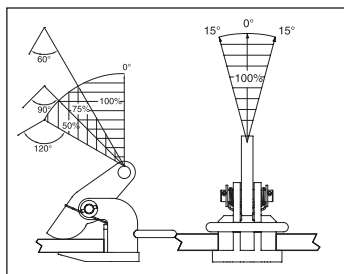
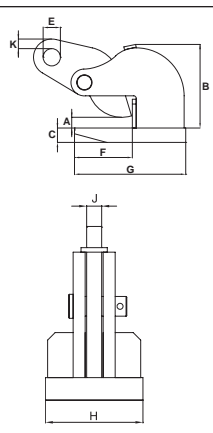
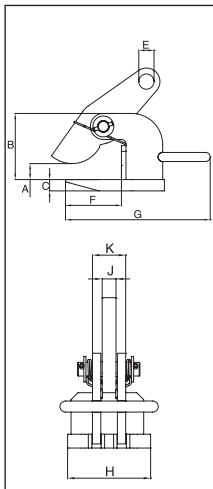
Model	Working Load Limit (Per Pair) (t)*	IPH10JE Stock No.	Weight Each (lbs.)	Dimensions (in)									
				Jaw A	B	C	E	F	G	H	J	K	L
IPH10JE	3	2703553	19.8	2.36 - 4.73	6.97	.79	1.02	4.29	10.5	4.73	.79	1.89	.43
IPH10JE	4.5	2703554	26.5	2.36 - 4.73	7.56	.99	1.18	4.10	11.0	5.12	.79	1.89	.47
IPH10JE	6	2703555	33.0	2.36 - 4.73	8.00	.99	1.42	4.85	12.6	5.12	.79	1.89	.55
IPH10JE	9	2703556	45.2	2.36 - 4.73	8.55	1.18	1.69	5.24	13.0	5.52	.99	2.44	.63
IPH10JE	12	2703557	25.9	2.36 - 4.73	9.14	1.18	1.85	5.56	13.9	5.91	.99	2.44	.67

\* Design Factor based on EN 13155 and ASME B30.20.

### Model IPHOZ: Jaw opening range 0 to 2.38"

Model	Working Load Limit (Per Pair) (t)*	IPHOZ Stock No.	Weight Each (lbs.)	Dimensions (in.)								
				Jaw A	B	C	E	F	G	H	J	K
IPHOZ	0.75	2705401	6.60	0 - 1.19	3.70	.63	.63	2.76	4.65	3.19	.47	.47
IPHOZ	1.5	2705402	12.1	0 - 1.75	5.24	.63	.87	4.92	7.56	3.94	.63	.47
IPHOZ	3	2705403	17.6	0 - 1.75	5.39	.79	1.02	4.92	7.87	4.72	.79	.39
IPHOZ	4.5	2705404	18.7	0 - 1.75	5.43	.98	1.18	4.96	8.66	4.72	.79	.39
<b>With larger jaw opening</b>												
IPHOZ	6	2705405	34.2	0 - 2.38	6.73	1.18	1.42	5.31	9.25	5.12	.79	.79
IPHOZ	9	2705406	45.2	0 - 2.38	8.31	1.18	1.69	6.54	10.87	6.30	.98	.79
IPHOZ	12	2705407	83.8	0 - 2.38	8.54	1.57	1.85	6.61	11.57	7.48	.98	.75
IPHOZ	15	2705408	83.8	0 - 2.38	8.66	1.57	1.85	7.20	12.48	9.84	.98	.87

\* Design Factor based on EN 13155 and ASME B30.20.



# Vertical Clamps

## IPNM10N



The IPNM10N vertical lifting clamp is used for the lifting, turning, moving or vertical transfer of sheet, plates, or fabrications from horizontal to vertical and down to horizontal (180°) as needed without marring the surface of the material. Materials such as aluminum, stainless steel, painted materials, aircraft skins, composite material, glass, plastic, etc., can be lifted without marring.

**Will NOT mar, or scratch the material surface.**

**For use in almost all sectors of industry where during the lift or transfer, no damage to the material is permitted.**

- Available in capacities of .5, 1 and 2 metric tons.
- Wide variety of jaw openings available: 0" to 1.50"
- Welded alloy steel body for strength and smaller size. Forged alloy components, where required.
- Individually Proof Tested to 2 times the Working Load Limit with certification.
- Company name (CrosbyIP), logo, Working Load Limit and jaw opening permanently stamped on body.
- Each product is individually serialized, with the serial number and Proof Load test date stamped on body. Serial number is included on the test certificate with maintenance and warranty logbook.
- Full 180° turning range for material transfer, turning or moving.
- Lock open, lock closed ability with latch for pretension on material and then release of material.
- Optional IP-5000 Stinger assembly available (see page 420). Allows for easy connection between the clamp and hoist hook.
- Material must be clean and dry.
- Maintenance replacement kits are available.
- Manufactured by a ISO 9001 facility.
- All sizes are **RFID EQUIPPED**.

## IPNM10P



The IPNM10P vertical lifting clamp is used for the lifting, turning, moving or vertical transfer of sheet, plates, or fabrications from horizontal to vertical and down to horizontal (180°) as needed without marring the surface of the material. Materials such as aluminum, stainless steel, painted materials, aircraft skins, composite material, glass, plastic, etc., can be lifted without marring. The protective cover reduces the risk of damage to surrounding plates.

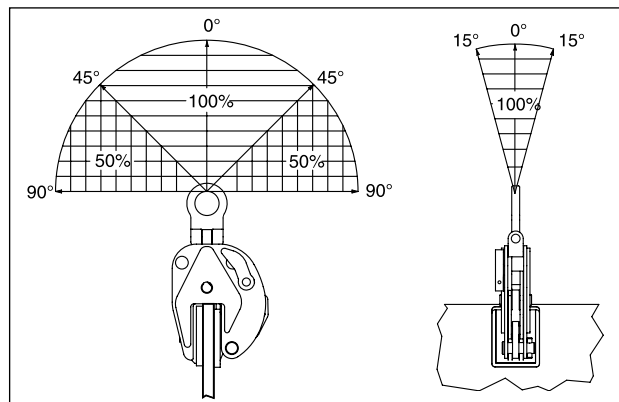
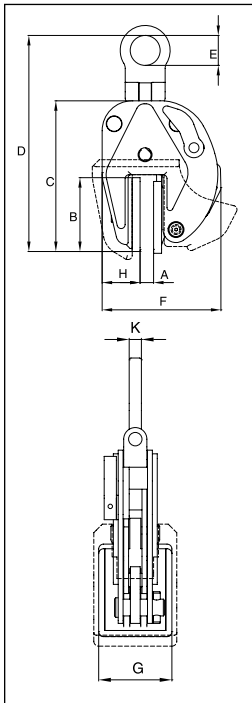
**Will NOT mar, or scratch the material surface.**



### Model IPNM10

Model	Working Load Limit (t)*	IPNM10 Stock No.	Weight Each (lbs.)	Dimensions (in.)								
				Jaw A	B	C	D	E	F	G	H	K
IPNM10N	.5	2703811	5.95	0 - .38	3.31	6.26	9.25	1.57	5.04	2.36	1.61	.43
IPNM10N	1	2703738	9.70	0 - .79	4.33	8.23	10.63	1.18	7.24	3.15	2.20	.39
IPNM10N	2	2703442	32.0	0 - 1.50	6.02	10.16	15.59	2.76	7.72	3.94	6.34	.63
<b>With protection cap</b>												
IPNM10P	.5	2703278	6.2	0 - .38	3.23	6.18	8.39	1.57	5.71	2.68	1.89	.43
IPNM10P	1	2703279	9.9	0 - .75	3.82	7.68	10.55	1.18	8.07	3.23	2.36	0.39
<b>With larger jaw opening</b>												
IPNM10NJ	1	2703814	12.1	.81 - 1.44	3.39	7.72	10.43	1.18	6.97	3.15	2.01	.39

\* Design Factor based on EN 13155 and ASME B30.20.



# Horizontal Clamps

## IPPE



## For the Lifting and Transfer of Bundles of Plates

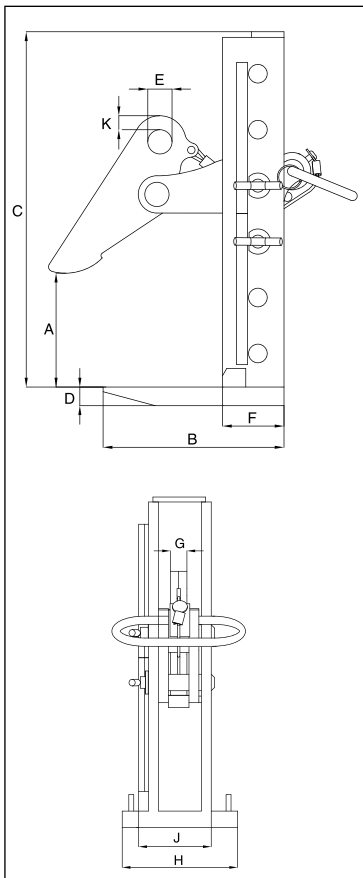
- Available in capacities of 3 thru 12 metric tons.
- Wide variety of jaw openings available: 0 to 16.5".
- Welded alloy steel body for strength and smaller size. Forged alloy components, where required.
- Individually Proof Tested to 2 times the Working Load Limit with certification.
- Company name (CrosbyIP), logo, Working Load Limit and jaw opening permanently stamped on body.
- Each product is individually serialized, with the serial number and Proof Load test date stamped on body. Serial number is included on the test certificate with maintenance and warranty logbook.
- Manufactured by a ISO 9001 facility.
- All sizes are **RFID EQUIPPED**.

The IPPE is suitable for the lifting and transfer of bundles of non-sagging steel plates in horizontal position. The jaw opening can be easily adjusted. Raising the handle opens the clamp. This facilitates the easy and quick placing or removing of the clamp.



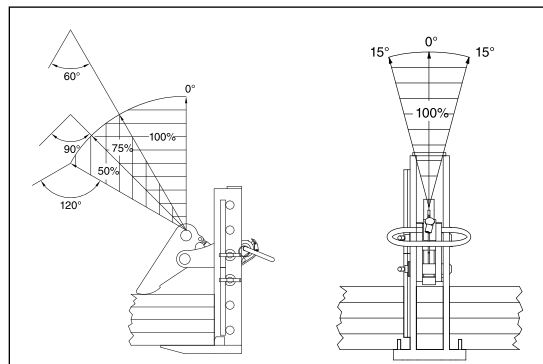
Load Rated

## Model IPPE



Model	IPPE Stock No.	Working Load Limit (Per Pair) (t)*	Weight Each (lbs.)	Dimensions (in.)									
				Jaw A	B	C	D	E	F	G	H	J	K
3 IPPEB	2700501	3.0	23.1	0 – 7.13	7.64	10.08	.79	1.02	2.60	.79	5.51	2.99	.59
3 IPPED	2700502	3.0	28.7	0 – 11.75	7.64	14.80	.79	1.02	2.60	.79	5.51	2.99	.59
3 IPPEH	2700503	3.0	30.9	0 – 16.50	7.64	19.53	.79	1.02	2.60	.79	5.51	2.99	.59
6 IPPEH	2700506	6.0	50.7	0 – 16.50	8.94	20.31	.98	1.18	4.02	.79	6.30	2.99	.51
9 IPPEH	2700509	9.0	68.3	0 – 16.50	10.63	22.28	.98	1.34	4.80	.79	7.48	2.99	.83
12 IPPEH	2700512	12.0	114.6	0 – 16.50	11.50	23.15	1.18	1.57	5.24	.98	7.87	3.82	.71

\* Design Factor based on EN 13155 and ASME B30.20.

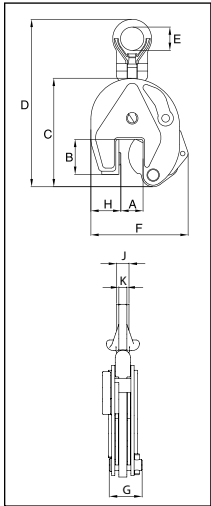


# Vertical Clamps

## IPU10



The IPU10 vertical lifting clamp is used for the lifting, turning, moving or vertical transfer of sheet, plates, or fabrications from horizontal to vertical and down to horizontal (180°) as needed. The hinged hoisting eye allows for the clamp to place and lift the load from any direction, or with a multiple leg sling without side-loading the clamp.



## Universal - For Lifting in any Direction

- Available in capacities of .5 thru 30 metric tons (Higher Working Load Limits are available upon request).
- Wide variety of jaw openings available: 0" to 6.13".
- Welded alloy steel body for strength and smaller size. Forged alloy components, where required.
- Individually Proof Tested to 2 times the Working Load Limit with certification.
- Company name (CrosbyIP), logo, Working Load Limit and jaw opening permanently stamped on body.
- Each product is individually serialized, with the serial number and Proof Load test date stamped on body. Serial number is included on the test certificate with maintenance and warranty logbook.
- Available in a variety of styles:
  - IPU10 - Standard clamp for materials with a surface hardness to 37Rc (345HB)
  - IPU10J - Larger jaw opening.
  - IPU10S - For use with Stainless Steel material.
  - IPU10H - For use with materials with a surface hardness to 47Rc (450HB).
- Full 180° turning range for material transfer, turning or moving.
- Lock open, lock closed ability with latch for pretension on material and then release of material.
- Optional IP-5000 Stinger assembly available (see page 420). Allows for easy connection between the clamp and hoist hook.
- Minimum WLL of 10% of Maximum WLL.
- Maintenance replacement kits are available.
- Manufactured by a ISO 9001 facility.
- All sizes are **RFID EQUIPPED**.

## IPU10S



**IPU10S:** For use on Stainless Steel material.  
**IPU10H:** For use on materials with a surface hardness to 47Rc (450 HB).



**Load Rated**

### Model IPU10

Model	Working Load Limit (t)*	IPU10 Stock No.	Weight Each (lbs.)	Dimensions (in.)									
				Jaw A	B	C	D	E	F	G	H	J	K
IPU10	0.5	2701675	4.19	0 - .63	1.73	5.04	8.98	1.57	4.53	1.61	1.10	-	.43
IPU10	1	2701663	5.29	0 - .75	1.77	5.47	8.74	1.57	4.96	1.61	1.50	-	.43
IPU10	2	2701677	18.7	0 - 1.38	3.07	7.91	14.65	2.76	7.48	2.40	2.17	-	.63
IPU10	3	2701665	32.6	0 - 1.56	3.94	9.96	17.52	2.95	8.86	3.07	2.36	-	.79
IPU10	4.5	2701667	35.3	0 - 1.56	3.94	9.96	17.52	2.95	9.13	3.23	2.56	-	.79
IPU10	6	2701669	53.0	0 - 2.00	4.96	11.89	20.67	3.15	11.50	3.31	3.74	1.73	.79
IPU10/J	6	2702469	67.3	2.00 - 4.00	4.96	11.89	20.67	3.15	13.46	3.31	3.74	1.73	.79
IPU10	9	2701671	65.0	0 - 2.00	4.96	12.80	21.93	3.15	12.20	3.62	4.13	1.73	.79
IPU10/J	9	2701673	67.2	2.00 - 4.00	4.96	12.80	22.13	3.15	14.17	3.62	4.13	1.73	.79
IPU10	12	2701679	126	0 - 2.13	6.30	15.39	24.53	3.15	13.03	4.61	5.39	1.61	.98
IPU10/J	12	2701681	130	2.13 - 4.25	7.01	17.28	26.50	3.15	16.34	4.61	5.39	1.61	.98
IPU10	16	2701683	159	.25 - 2.50	7.01	18.31	28.90	3.46	15.63	4.69	6.02	1.77	.98
IPU10/J	16	2701685	187	2.50 - 5.00	8.19	20.51	31.10	3.46	18.58	4.69	6.34	1.77	.98
IPU10	22.5	2701687	280	.25 - 3.13	8.74	21.81	33.66	4.33	18.50	5.35	7.32	1.93	.98
IPU10/J	22.5	2701689	287	3.13 - 6.13	9.96	24.72	36.61	4.33	22.64	5.35	7.72	1.93	.98
IPU10	30	2701691	337	.25 - 3.13	8.74	21.46	33.86	4.33	18.50	5.98	7.32	2.13	1.18
IPU10/J	30	2701693	364	3.13 - 6.13	9.84	24.41	36.81	4.33	22.24	5.98	7.72	2.13	1.18
<b>For stainless steel - with universal hoisting eye</b>													
IPU10/S	0.5	2702275	4.19	0 - .63	1.73	5.04	8.98	1.57	4.53	1.61	1.10	-	.43
IPU10/S	1	2702263	4.63	0 - .75	1.77	5.47	8.74	1.57	4.96	1.61	1.50	-	.43
IPU10/S	2	2702277	16.8	0 - 1.38	3.07	7.91	14.65	2.76	7.48	2.40	2.17	-	.63
IPU10/S	3	2702265	32.7	0 - 1.56	3.94	9.96	17.52	2.95	8.86	3.07	2.36	-	.79
IPU10/S	4.5	2702267	35.3	0 - 1.56	3.94	9.96	17.52	2.95	9.13	3.23	2.56	-	.79
IPU10/S	6	2702269	53.0	0 - 2.00	4.96	11.89	20.67	3.15	11.50	3.31	3.74	1.73	.79
IPU10/S	9	2702271	65.1	0 - 2.00	4.96	12.80	21.93	3.15	12.20	3.62	4.13	1.73	.79
IPU10/S	12	2702279	67.3	0 - 2.13	6.30	15.39	24.53	3.15	13.03	4.61	5.39	1.61	.98
<b>For very hard materials - with universal hoisting eye</b>													
IPU10/H	0.5	2702175	4.19	0 - .63	1.73	5.04	8.98	1.57	4.53	1.61	1.10	-	.43
IPU10/H	1	2702177	16.8	0 - 1.38	3.07	7.91	14.65	2.76	7.48	2.40	2.17	-	.63
IPU10/H	2	2702165	32.7	0 - 1.56	3.94	9.96	17.52	2.95	8.86	3.07	2.36	-	.79
IPU10/H	3	2702167	35.3	0 - 1.56	3.94	9.96	17.52	2.95	9.13	3.23	2.56	-	.79
IPU10/H	4.5	2702169	53.0	0 - 2.00	4.96	11.89	20.67	3.15	11.50	3.31	3.74	1.73	.79
IPU10/H	6	2702171	65.1	0 - 2.00	4.96	12.80	21.93	3.15	12.20	3.62	4.13	1.73	.79

\* Design Factor based on EN 13155 and ASME B30.20.

